

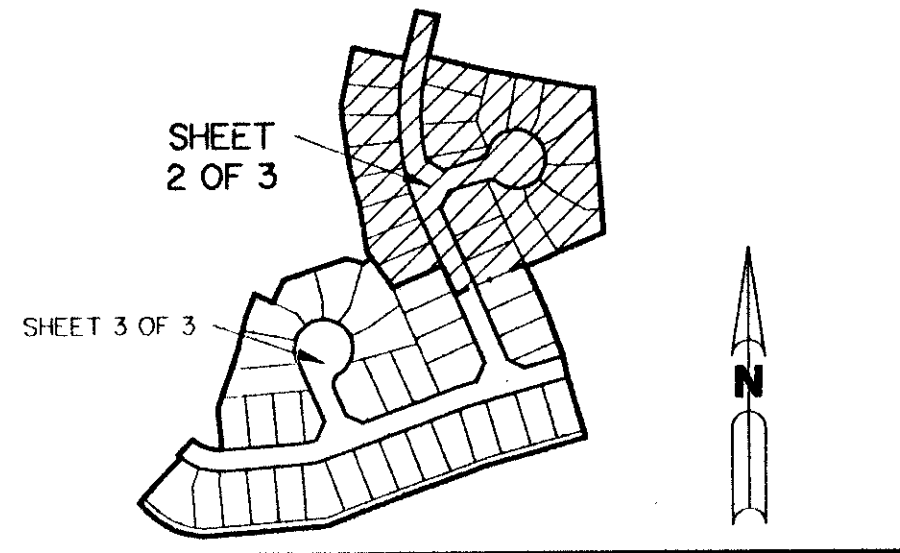
A PART OF LAKE CHARLESTON PLANNED UNIT DEVELOPMENT

LAKE CHARLESTON - TRACT "I" - PLAT TWO

BEING A REPLAT OF A PORTION OF TRACT "I" ACCORDING TO THE
PLAT OF LAKE CHARLESTON PLAT NO. 3 - AS RECORDED IN PLAT BOOK 62,
PAGES 55 THROUGH 68 INCLUSIVE, OF THE PUBLIC RECORDS OF PALM BEACH COUNTY, FLORIDA.
SECTION 9, TOWNSHIP 45 SOUTH, RANGE 42 EAST

SHEET 2 OF 3

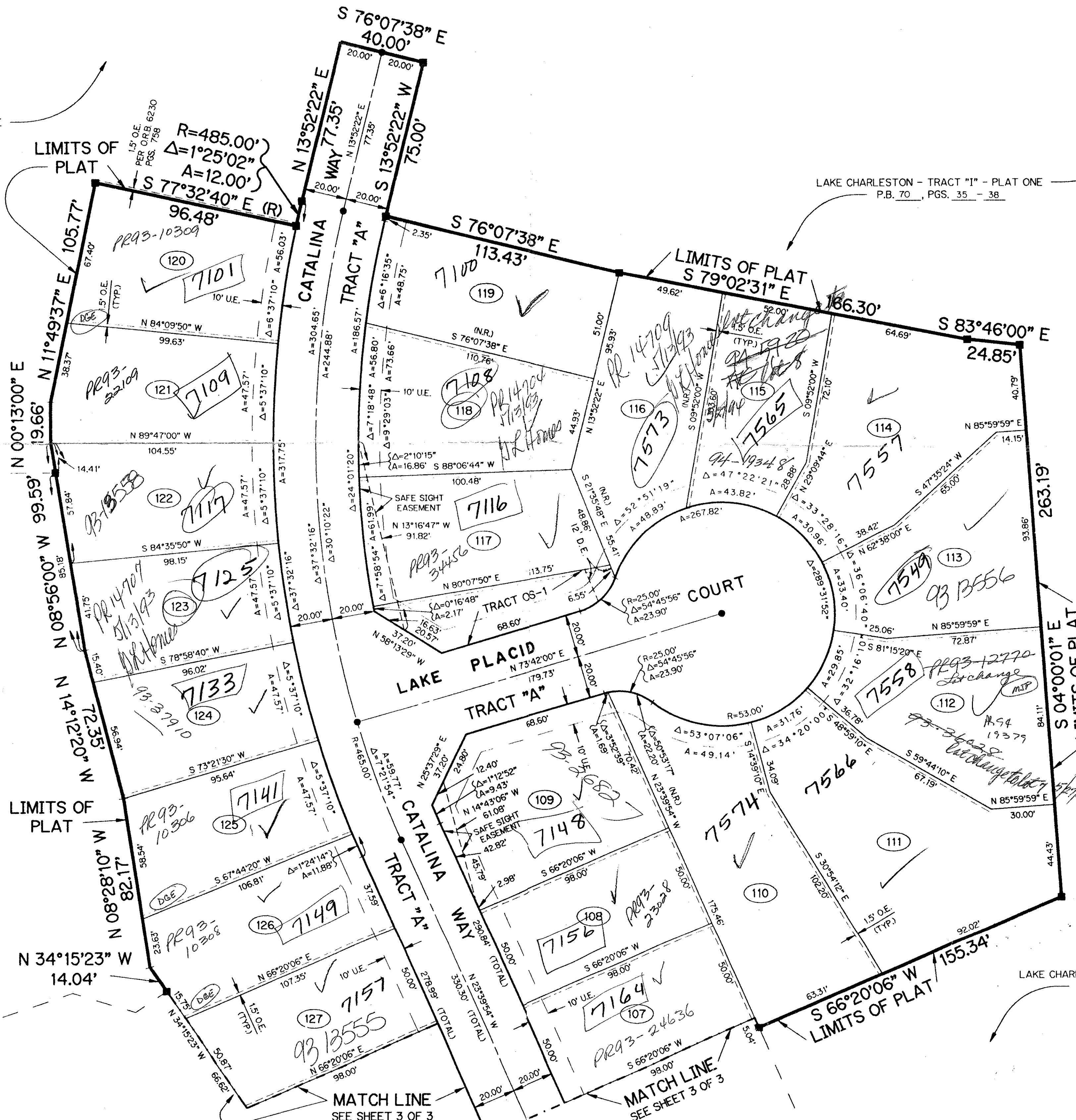
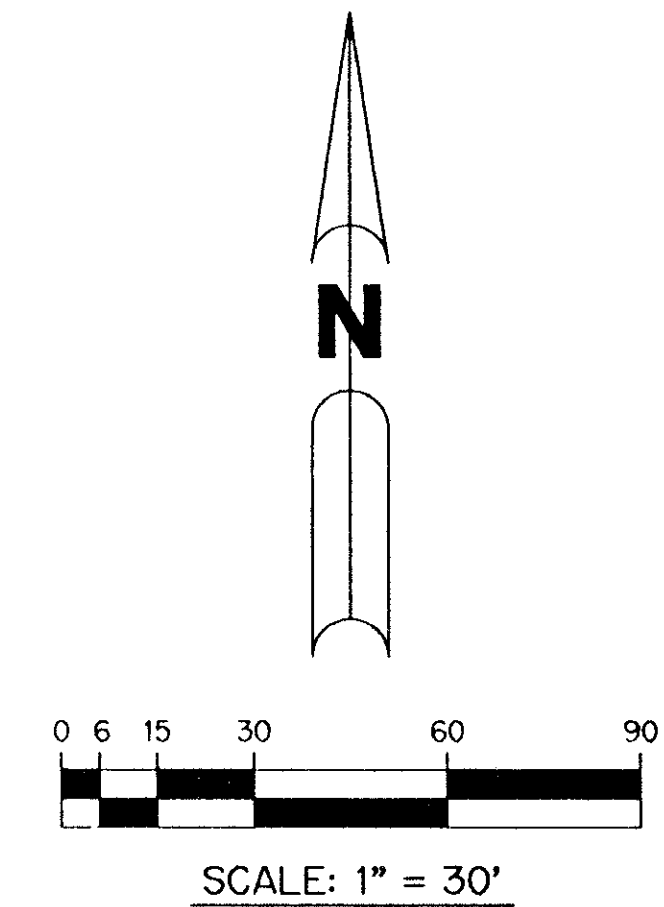
MAY, 1992



KEY MAP
N.T.S.

LAKE CHARLESTON - TRACT "I" - PLAT ONE
P.B. 70, PGS. 35 - 38

LAKE CHARLESTON - TRACT "I" - PLAT ONE
P.B. 70, PGS. 35 - 38



TRACT "I"
LAKE CHARLESTON - PLAT NO. 3
P.B. 62, PGS. 55-68

LAKE CHARLESTON - TRACT "I" - PLAT ONE
P.B. 70, PGS. 35 - 38

LAKE CHARLESTON TRACT I
SUBDIVISION PLAT TWO
BOOK 70 PAGE 76
FLOOD ZONE B FLOOD MAP # 185A
QUAD # 49 ZONING RTS
SE ZIP CODE 33437
P.L.S. NAME SAME
0533-016

TAZ = 439

0533-016
PET 86-96
ALLOC. # 0009
WITH ASSIGNMENT
LETTER ONLY

THIS INSTRUMENT PREPARED BY
PERRY C. WHITE P.L.S. 4213 STATE OF FLORIDA
LAWSON, NOBLE AND ASSOCIATES, INC.
ENGINEERS PLANNERS SURVEYORS
WEST PALM BEACH, FLORIDA

LAKE CHARLESTON - TRACT "I" - PLAT 2